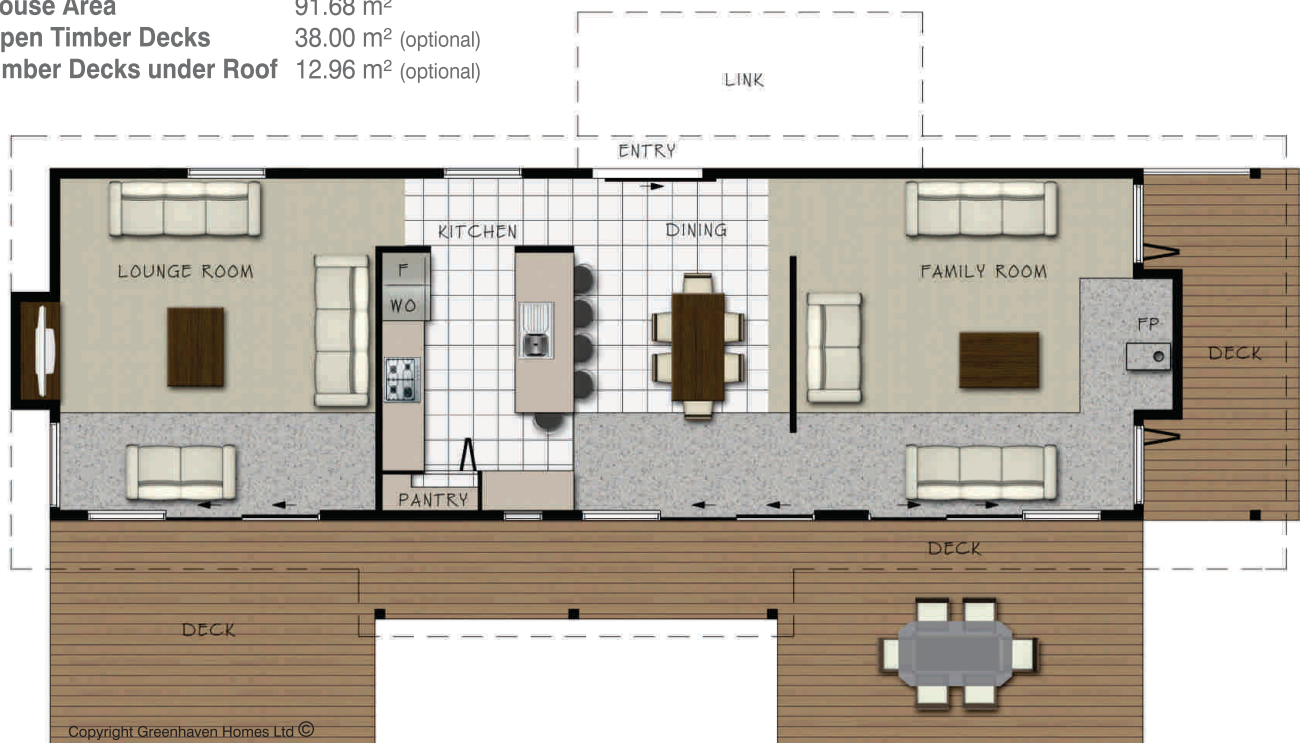




Plan GH000

House Area	91.68 m ²
Open Timber Decks	38.00 m ² (optional)
Timber Decks under Roof	12.96 m ² (optional)



Greenhaven Homes are:

- AFFORDABLE** - Smart floor plans with few hallways and waste space enables a smaller overall house area at a competitive initial cost.
- DURABLE** - Built for NZ's coastal environment with a minimum of maintenance required.
- STRONG** - The primary structural material (wood) is a proven performer and the latest wind and earthquake resistant bracing systems are utilised.
- SUSTAINABLE** - We use materials and process's that are environmentally responsible and resource efficient throughout each homes life cycle, from siting to design, construction and operation. Wood especially is abundant, renewable and carbon neutral.
- COMFORTABLE** - Various proven energy efficient design features and products as detailed in our typical specifications section ensure healthy and comfortable living for the lifetime of each home.

Greenhaven
SMART HOMES